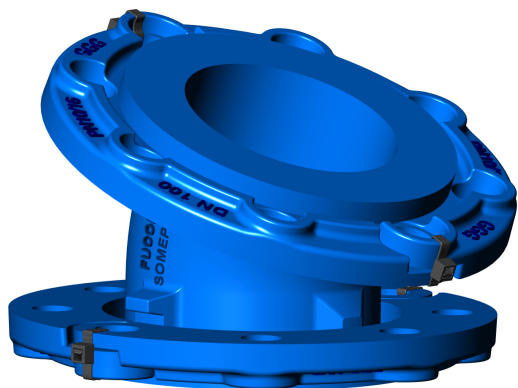


# CURVA DE FLANGE MÓVEL A 11° 15' 10.1003

## DOUBLE MOVABLE FLANGED 11° 15' BEND



PN 10 / 16 / 25

Flange DIN EN 1092-2

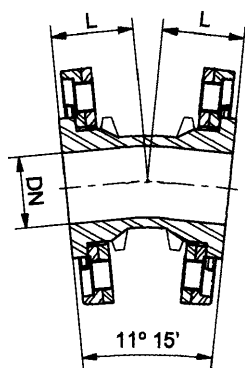
A partir de DN 700 inclusive as curvas são de flange fixa.

From DN 700 inclusively the bends are with fixed flanges.

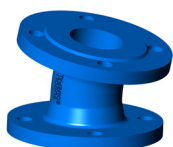
componente	material	component	material	norma	standard
corpo e flanges	ferro fundido dúctil (EN-GJS-500)	body and flanges	ductile iron (EN-GJS-500)	DIN EN 1563	
revestimento anticorrosivo interior e exterior	tinta epóxica potável RESICOAT 9000 R4 BLUE aplicada electrostaticamente com espessura $\geq 250 \mu\text{m}$	coating inside and outside	epoxy paint potable RESICOAT 9000 R4 BLUE applied electrostatically with thickness $\geq 250 \mu\text{m}$	DIN 30677	

**Sob Consulta:**  
Outros diâmetros.

**On request:**  
Other diameters.



DN	Código - Code			L	Peso - Weight (Kg)		
	PN 10	PN 16	PN 25		PN 10	PN 16	PN 25
40	10004010	10004010	10004012	57	3.5	3.5	3.5
50	10004020	10004020	10004022	57	5.3	5.3	5.3
60	10004030	10004030	10004032	57	5.6	5.6	5.6
65	10004040	10004040	10004042	57	5.6	5.6	5.6
80	10004050	10004050	10004052	57	7.2	7.2	7.2
100	10004060	10004060	10004062	60	8.7	8.7	9.5
125	10004070	10004070	10004072	63	11.0	11.0	11.8
150	10004080	10004080	10004082	68	13.6	13.6	14.4
200	10004090	10004090	10004092	71	18.4	18.4	19.8
250	10004100	10004101	10004103	84	28.4	28.4	31.0
300	10004110	10004111	10004114	95	40.6	40.6	45.0
350	10004112	10004113	10004118	110	53.0	55.8	67.0
400	10004120	10004121	10004123	120	67.6	73.4	84.6
450	10004130	10004131	10004435	125	80.0	89.0	100.0
500	10004150	10004151	10004153	130	102.0	120.0	132.0
600	10004160	10004161	10004163	150	134.0	154.0	166.0
700	10121150	10121152	10121154	175	-	-	-
800	10121160	10121162	10121164	190	262.0	302.0	-
900	10121170	10121172	10121174	213	-	-	-
1000	10121180	10121182	10121184	230	-	-	-



### Homologações - Homologation

#### Revestimento - Coating

- INETI (Portugal)
- KIWA (Holanda - Netherlands)
- WRAS (Reino Unido - United Kingdom)
- CARSO (França - France)
- HYGIENE Institut Ruhrgebiets (Alemanha - Germany)

